

Who we are



We are Social Development Direct.



We give advice to people working on **International Development** on how to include all people, such as women and people with disabilities



International Development

supports people around the world who do not have enough access to the things they need.



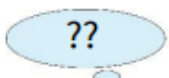
We work with other groups to run the Disability Inclusion Helpdesk.



This booklet is part of the **12th Helpdesk Evidence Digest**. It focuses on social protection and people with disabilities.



Please look at the full report for links to documents or for more information.



Sometimes we need to use new or difficult words. These words are in bold. There is a list of what they mean at the end of the

Discussion about people with disabilities and care



Elisabeta Moldovan is the co-leader of an organisation of people with disabilities in Romania.



In Romania it is difficult for people with disabilities to access care services.



Around 16,600 people with disabilities live in **institutions** in Romania.



They are kept separate from other people and do not get to make their own decisions.



Elisabeta lived in an **institution** for 25 years.



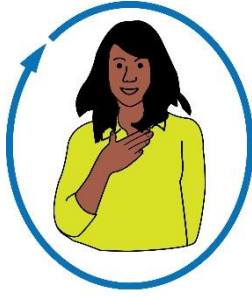
She was often left alone and nobody looked after her when she was ill.



People with disabilities are often not given a choice about the care they get.



Some people think that people with disabilities cannot make their

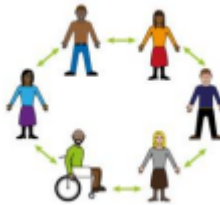


own decisions and do not give them the option to try.

Good care is good services that focus on what each person needs. This could be services in the community or at home.



When there are enough good services in the community there is no need for **institutions**.



Organisations should come together to ask for **institutions** to be closed.

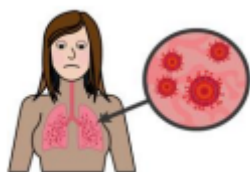


People with disabilities can come together to ask for their rights.



People should respect the rights of people with disabilities to make their own choices.

Evidence and guidance on disabilities and care



The **COVID-19 pandemic** made it more difficult for people with disabilities to access care services.



People with disabilities were more likely to have to go to hospital during the **COVID-19 pandemic**, and more likely to feel lonely.



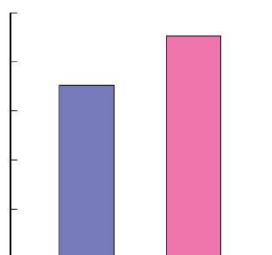
The COVID-19 pandemic had a bigger impact on people with disabilities who lived in **institutions**. This meant that more people asked for **institutions** to be closed.



New guidelines have been made on how to close **institutions** in emergency situations.



A report was published on how quickly different countries in Europe are closing **institutions**.



The number of people with disabilities living in **institutions** in Europe has not changed very much in the last 10 years.



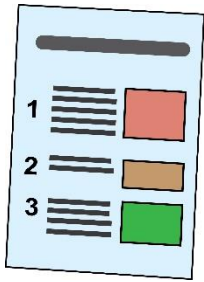
The cost of health services, and travel to health centres, is a big barrier for people with disabilities.



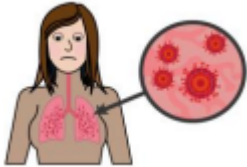
The attitudes of health service workers is another barrier. Sometimes health workers treat people with disabilities badly.



Training health workers, reducing cost and making health centres more accessible can make it easier for people with disabilities.



What do these words mean?



COVID-19 is a virus that has made lots of people around the world ill.

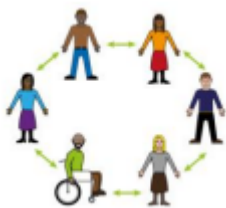


International Development

supports people around the world who do not have enough access to the things they need.



Institutions are places where people with disabilities live with other people with disabilities. They live apart from other people.

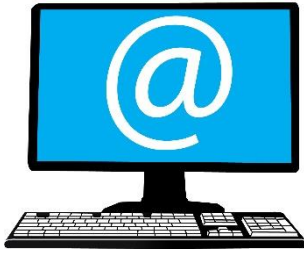


Organisations of people with disabilities work in countries around the world and support people with disabilities to live good lives.



Research is about finding lots of information about a specific thing and bringing it all together into data or a report

Contact us



If you want to talk to us send an email to this address
enquiries@disabilityinclusion.org.uk

Images/Resources copyright © LYPFT



**People
First**



Images used in this document come from the People First (Self Advocacy) Picture Bank

Disability Inclusion Helpline, February 2021	
Evidence digest focus issue: Social Protection and Disability Inclusion	
Contents	
Contents	1
What they can do to help to make a difference	1
The best practice and government of disability inclusion and social protection	2
Key points	5
Further information	6
References	7
Prepared by	7
Prepared for	8
How to contact the helpline	8
About the Disability Inclusion Helpline	9

The full version of this document is called **Evidence Digest: Disability Inclusion and Care**